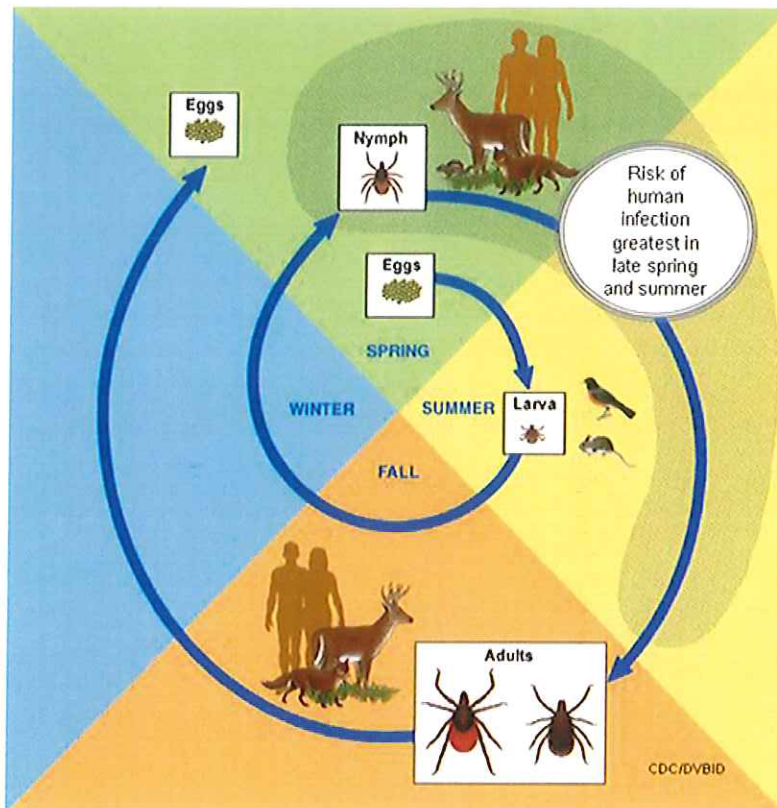


## Mice are a **PART** of the problem!



- In addition to white-footed mice, many other rodents carry the bacteria that causes Lyme disease, including the red squirrels and shrews found on Islesboro. Migrating birds such as robins and sparrows also carry the bacteria. When *young ticks* feed on the blood of small rodents and birds, they become infected with disease-causing bacteria.
- It is not feasible to control the vast numbers of rodents and birds that carry the Lyme bacteria.
- Deer provide blood meals and a breeding ground to *adult ticks*.
- When ticks cannot feed and breed, ticks decline.
- To reduce the threat of tick-borne disease on Islesboro, the number of deer that provide blood meals and a breeding ground to adult ticks must be reduced to close to 10 per square mile.