



Known for excellence. Built on trust.



Islesboro Narrows – Proposed 60% Design for Roadway and Coastal Protection Improvement Islesboro, Maine

SLRC Meeting

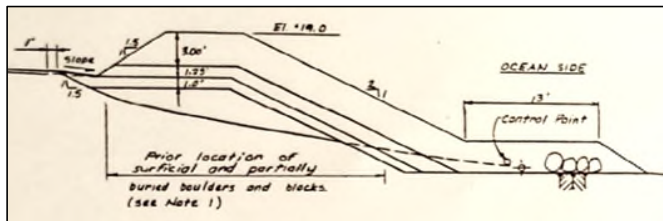
September 11, 2025



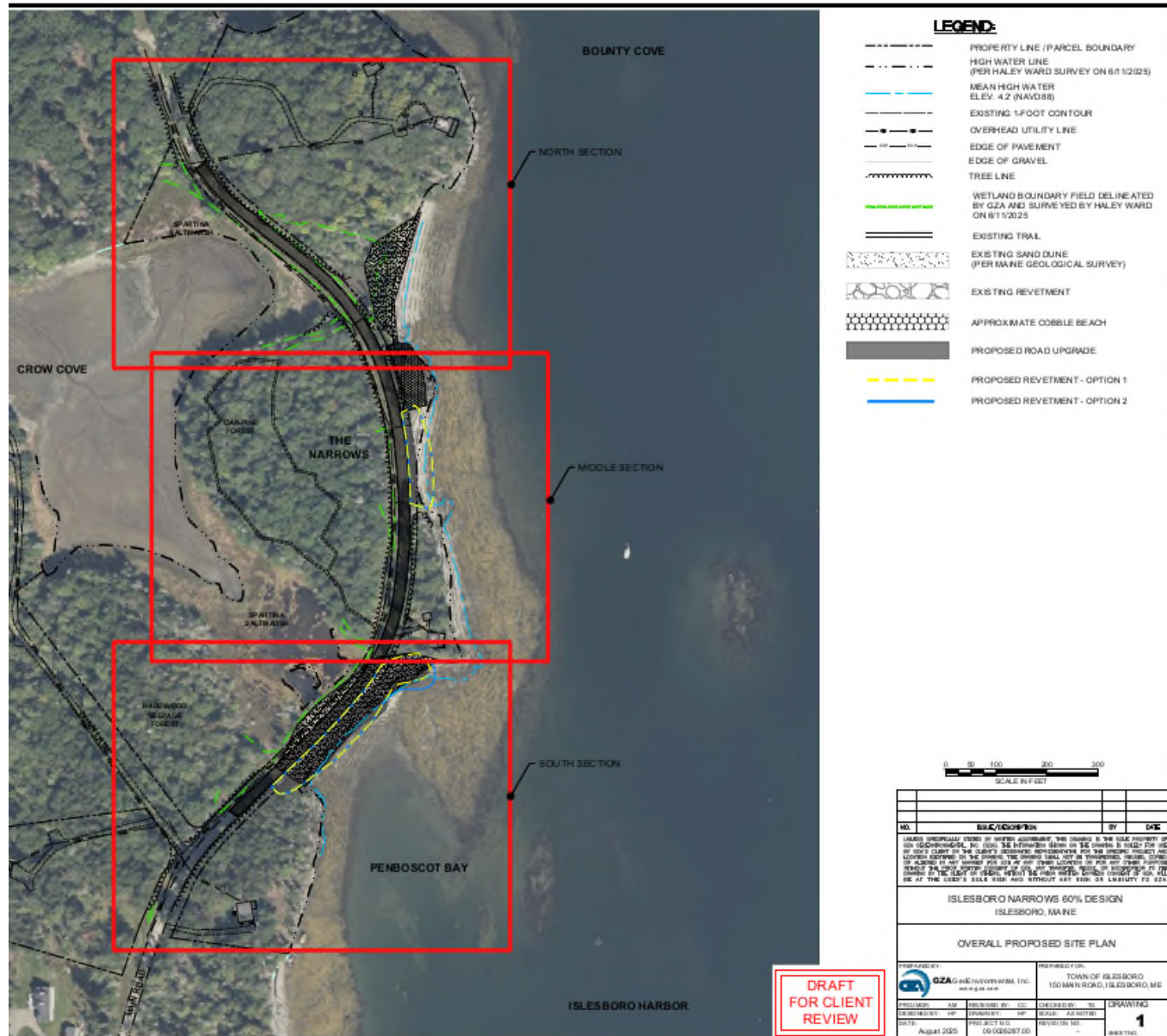
Olivia Lenfestey, Island Institute Fellow

Proposed Project (60% Design)

- Main Road - Raise approx. 4' to elevation 15 (NAVD88)
- North Narrows – vegetation along upper slopes, install guardrail
- Middle Narrows – Replace stone treatment with engineered revetment for +3.9' Sea Level Rise conditions
- South Narrows - Replace existing revetment (c.1984) with engineered revetment for +3.9' Sea Level Rise conditions
- “Tall and Skinny” Revetments



Excerpt Army Corps of Engineers Revetment Cross-Section, The Narrows 1984



60% Design Project Timeline

Survey
Field
Work

Preliminary
60% Design
Drawings

Completed
60% Design

Survey
Plans

SLRC
Review/
Remote
Meeting

June 2025

July 2025

August 2025

September 2025

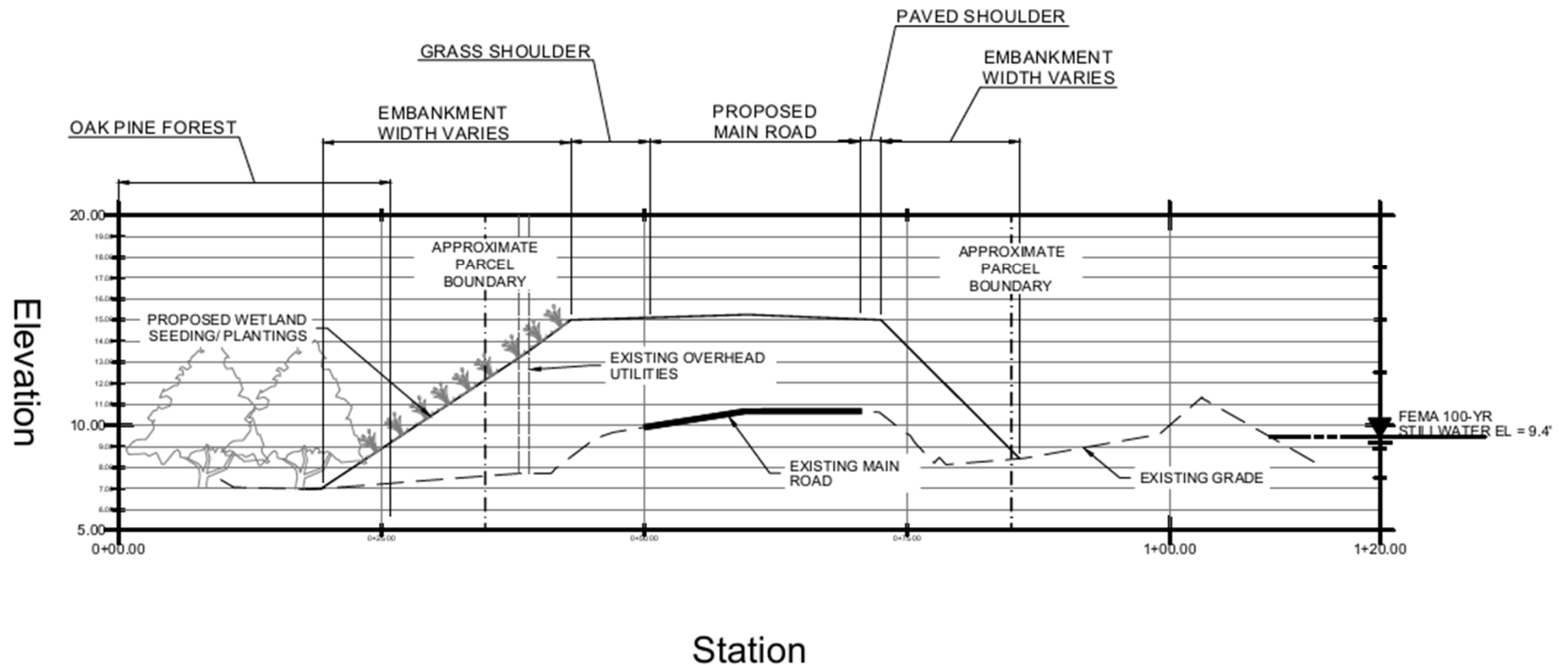
October 2025

Proposed 60% Design – North Narrows

GEOTECHNICAL ENVIRONMENTAL ECOLOGICAL WATER CONSTRUCTION MANAGEMENT



Proposed 60% Cross Section – North Narrows



SECTION A- NORTH NARROWS

NOTE: SECTION SHOWN FOR STA 14+25
OFFSETS VARY ALONG THE ROADWAY

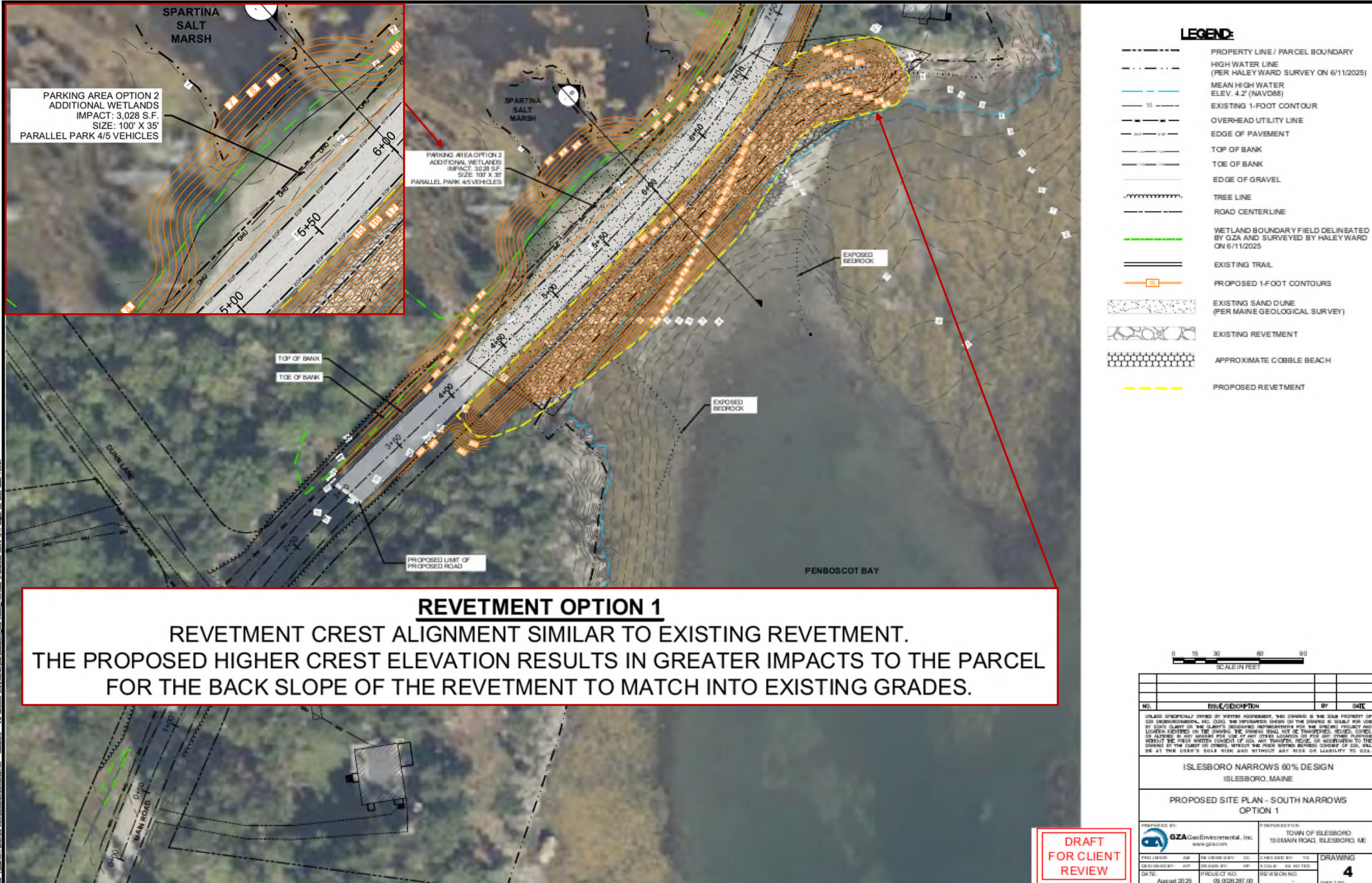
Proposed 60% Design – Middle Narrows

GEOTECHNICAL ENVIRONMENTAL ECOLOGICAL WATER CONSTRUCTION MANAGEMENT



Proposed 60% Design – South Narrows option 1

GEOTECHNICAL ENVIRONMENTAL ECOLOGICAL WATER CONSTRUCTION MANAGEMENT



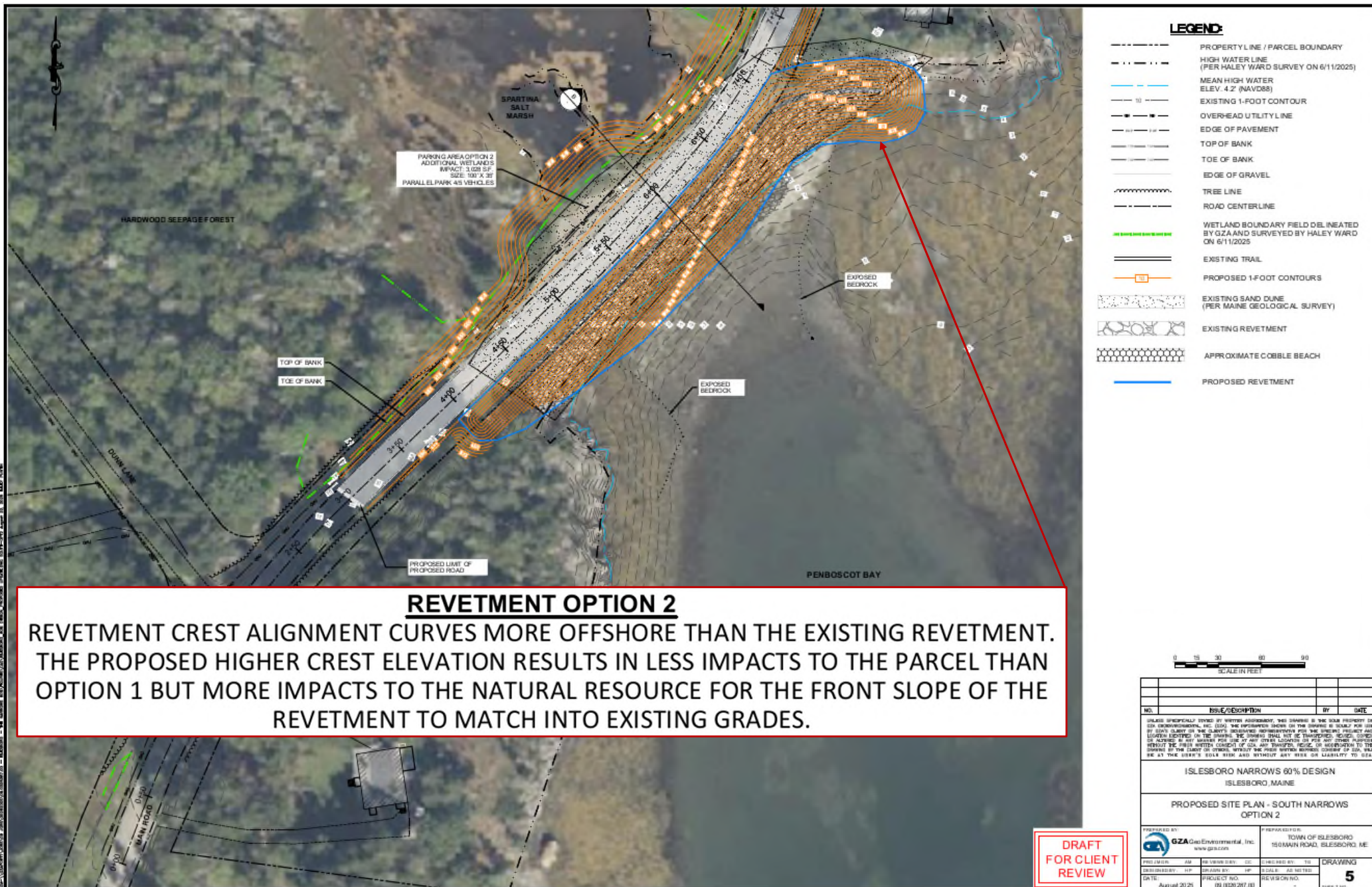
DRAFT FOR CLIENT REVIEW

September 11, 2025 - SLRC Meeting Presentation

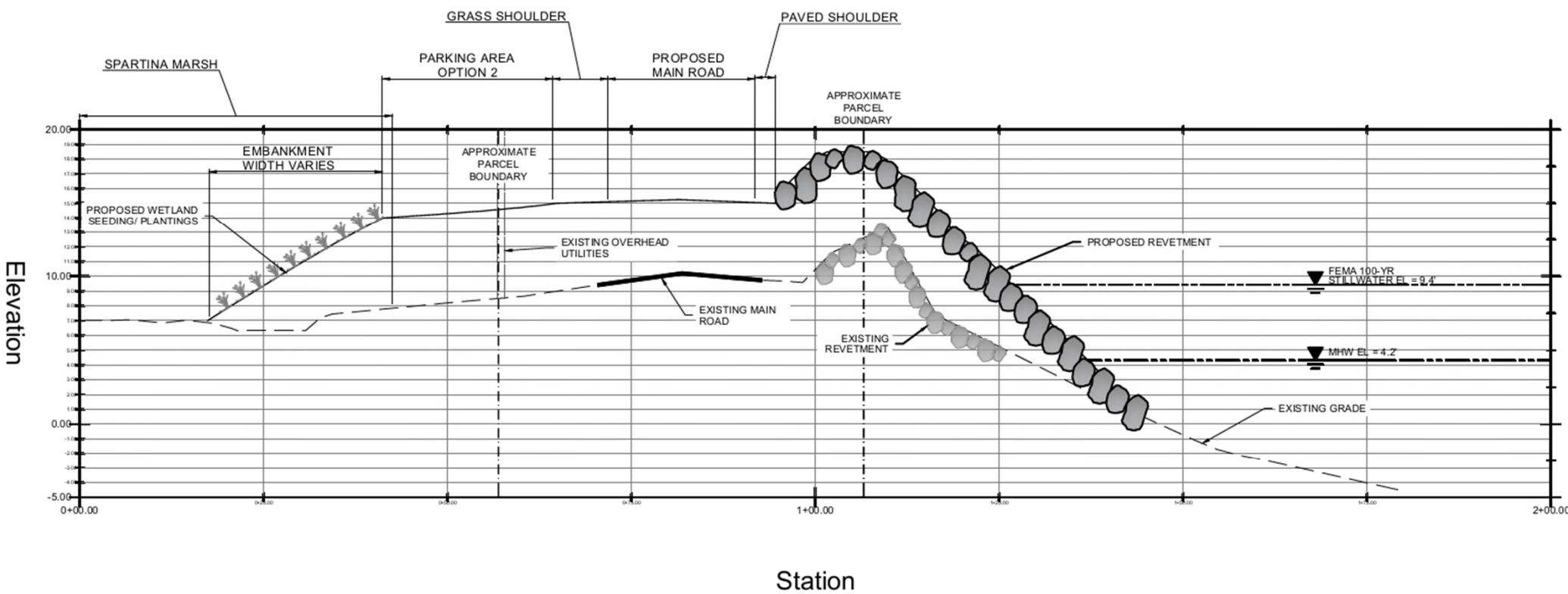
PRELIMINARY 60% DESIGN FOR MEETING DISCUSSION ONLY.

Proposed 60% Design – South Narrows OPTION 2

GEOTECHNICAL ENVIRONMENTAL ECOLOGICAL WATER CONSTRUCTION MANAGEMENT



Proposed 60% Cross Section – South Narrows



SECTION B' - SOUTH NARROWS
 NOTE: SECTION SHOWN FOR STA 5+50
 OFFSETS VARY ALONG THE ROADWAY

Proposed Project Impacts and Cost Estimate

- Approximate Natural Resource Impacts – **PRELIMINARY ESTIMATES**

	Wetland Impacts	Area Below MHW	Sand Dune Impacts
OPTION 1	20,688 S.F.	2,546 S.F.	26,520 S.F.
OPTION 2	20,688 S.F.	3,542 S.F.	26,040 S.F.

- Approximate Project Cost – **PRELIMINARY ESTIMATES**

Item	Approximate Cost
Roadway, Parking, and Trail Access	\$1.9M - \$2.0M
Utility Relocation	\$100K - \$125K
Revetments	\$2.4M - \$2.8M
Island Location 15% Contingency	\$0.7M - \$0.7M
In Lieu Fee Compensation	\$240K - \$520K

Total **\$5.3M - \$6.1M***

* This cost estimate is for general planning purposes. Actual cost may vary depending on when the work is completed, labor and material costs and the waterfront marine construction bid environment. Individual line item cost estimates are order of magnitude estimates with respect to the total project cost estimate. Actual costs may vary and could be significantly more, or less, than shown.

Next Steps

Complete
60%
Design

Assist with
Permitting

Contract
Documents

Contract
for Final
Design

Final
Design

* Correspondence with utility company regarding utility relocation

** Coordination with abutting property owners (ongoing)